



Industrial Service Solutions

**Product & Service Catalog**

# ***COMPRESSORS***





CONTROLS

MOTORS

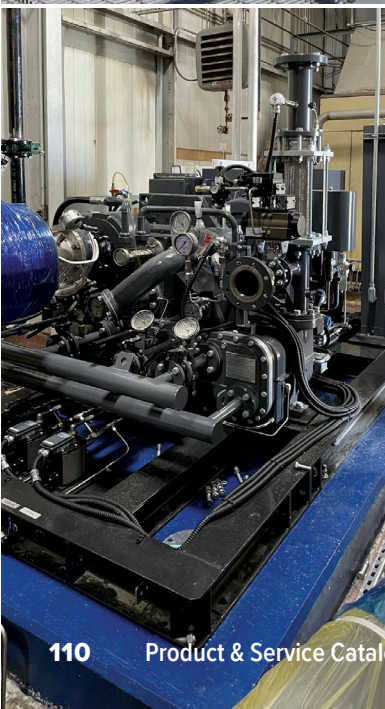
PUMPS

VALVES

COMPRESSORS

PNEUMATICS

SAWMILLS

METAL  
RECYCLINGTRANSIT &  
RAILROADWATER &  
WASTEWATERDIMENSIONS  
& MOUNTING

## Compressor Field Services

Industrial Service Solutions' nationwide network of field experts and fully equipped service vehicles, including 53-foot mobile tooling trailers, are available around-the-clock for your unplanned maintenance and emergency repairs. Our tenured, highly skilled, and often factory-trained technicians have the know-how and independent capabilities to troubleshoot, diagnose, and yield solutions for all compression equipment types, brands, and applications. At Industrial Service Solutions, our personnel are supported by a flex workforce of vetted talent for unmatched response and turnaround times.

- + *Emergency Support*
- + *Onsite Repairs & Overhauls*
- + *Maintenance & Inspections*
- + *Machining & Fabrication*
- + *Rigging & Installation*
- + *Systems Integration*
- + *Troubleshooting & Testing*
- + *Service Agreements*

# Compressor Repair Shops

Our high-capacity shops are fully equipped to service and repair all compressor types and brands to your exact specifications, on time, and within budget. Whether it's a complete overhaul or a single part, our technicians have the technical expertise and tailored processes to deliver equipment better than new, with tighter tolerances and enhanced efficiency. For emergency repairs, our shops are available around-the-clock to machine and fabricate unavailable or obsolete parts.

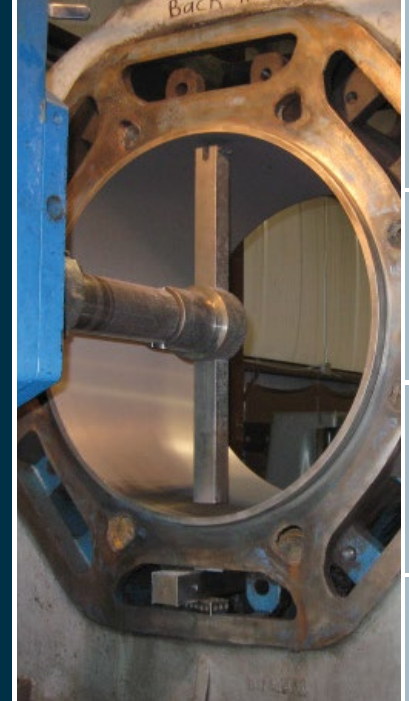
- + *Repairs & Overhauls*
- + *Certified Remanufacturing*
- + *Machining & Fabrication*
- + *Part Engineering & Procurement*
- + *Retrofits & Upgrades*
- + *Dynamic Balancing*
- + *Troubleshooting & Testing*
- + *Rental Program*



# Quality Parts & Equipment

Industrial Service Solutions is committed to providing optimal compressor performance through a wide range of OEM and high-quality aftermarket parts and lubricants. Our extensive inventory includes new, used, and certified refurbished parts from most major manufacturers. In addition to competitively priced spare parts, we provide consultative support for improved reliability, performance, and emissions.

- + *Centrifugal Parts*
- + *Rotary Screw Parts*
- + *Consumables*
- + *Reciprocating Parts*
- + *Components*



CONTROLS

MOTORS

PUMPS

VALVES

COMPRESSORS

PNEUMATICS

SAWMILLS

METAL RECYCLING

TRANSIT & RAILROAD

WATER & WASTEWATER

DIMENSIONS & MOUNTING



# Centrifugal Compressors

## SERVICES

- + Nationwide field service with fully equipped mobile tooling trailers for onsite compressor repairs and complete overhauls.
- + **Complete Overhaul Capability** with turret lathes, horizontal and vertical mills, cylindrical and surfacing grinding, and dynamic balancing
- + **Air End Assembly Repairs** include disassembly, cleaning, inspection, blending of erosion damage, replacement of impellers, pinions, diffusers, bearings, seals, O-rings, gaskets, and fasteners as required, reassembly, balancing, and painting.
- + **Rotor Assembly Repairs** include disassembly, cleaning, inspection, blending of erosion damage, replacing impeller/pinions, reassembly, and balancing.
- + **Bull gear Repairs** include inspection, grind-plate-grind, blending of damaged teeth, and balancing.
- + **Gearbox Repairs** include...
- + **Inlet Repairs** include disassembly, cleaning, inspection, machining, painting, and reassembly of eroded/corroded parts.
- + **Bearing Repairs** include fixed profile pinion and bull gear bearings, remove and replace babbit, and recondition bearing to new specifications.
- + **Cooler Repairs** include cleaning, hydro testing, tube expanding, tube bundles or re-tube, and tube plugging.
- + **Ingersoll Rand Centac Intercooler Capabilities** include testing and cleaning fixtures for all frames, re-tubing, barrel repairs, blasting and painting, and sleeve sealing surfaces with stainless steel surfaces.
- + **Complete Rental Fleet**



# Reciprocating Compressors

## SERVICES

- + Nationwide field service with fully equipped mobile tooling trailers for onsite compressor repairs and complete overhauls.
- + **Complete Overhaul Capability** turret lathes, horizontal and vertical mills, cylindrical and surfacing grinding, and dynamic balancing
- + **Air End Assembly Repairs** include disassembly, cleaning, inspection, blending of erosion damage, replacement of impellers, pinions, diffusers, bearings, seals, O-rings, gaskets, and fasteners as required, reassembly, balancing, and painting.
- + **Cylinder Repairs** include boring, honing, cold metal stitching up to 50" diameter. Pattern casting capability when manufacturing new cast iron cylinders.
- + **Piston/Rod Repairs** include machining all tolerances, re-establishing diametrical running clearances by metallizing OD with babbitt/bronze, and Teflon conversions.
- + **Bearing Repairs** include fixed profile pinion and bull gear bearings, remove and replace babbitt, and recondition bearing to new specifications.
- + **Cooler Repairs** include cleaning, hydro testing, tube expanding, tube bundles or re-tube, and tube plugging.
- + **Motor Repairs**
- + **Control Designs & Retrofits**
- + **Oil Pump Repairs**
- + **Laser Alignment**
- + **Complete Rental Fleet**



# Rotary Screw Compressors

## SERVICES

- + Nationwide field service with fully equipped mobile tooling trailers for onsite compressor repairs and complete overhauls.
- + **Complete Overhaul Capability** turret lathes, horizontal and vertical mills, cylindrical and surfacing grinding, and dynamic balancing
- + **Air End Assembly Repairs** include disassembly, cleaning, inspection, blending of erosion damage, replacement of impellers, pinions, diffusers, bearings, seals, O-rings, gaskets, and fasteners as required, reassembly, balancing, and painting.
- + **Bearing Repairs** include fixed profile pinion and bull gear bearings, remove and replace babbit, and recondition bearing to new specifications.
- + **Cooler Repairs** include cleaning, hydro testing, tube expanding, tube bundles or re-tube, and tube plugging.
- + **Motor Repairs**
- + **Control Designs & Retrofits**
- + **Oil Pump Repairs**
- + **Laser Alignment**
- + **Complete Rental Fleet**



# Compressor Replacement Parts

---

## COMPONENTS

- + Coolers
- + Dryers
- + Blowers
- + Motors
- + Pumps
- + Controls
- + Impellers
- + Cylinders
- + Pistons & Rods
- + Hoses

## CONSUMABLES

- + Lubricants
- + Filters
- + Separators
- + Valves
- + Gaskets
- + O-Rings
- + Bearings & Seals
- + Maintenance Kits



# Coolers



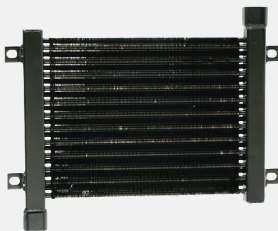
*Aftercoolers*



*Oil Coolers*



*Combination Air/Oil Coolers*



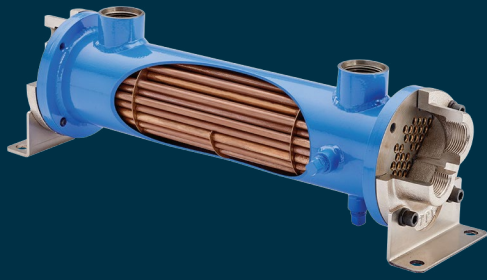
*Belt Guard Aftercoolers*



*Skid Packaged Coolers*



*Liquid Coolers*



# Shell & Tube Heat Exchangers

## SERVICES

- + Nationwide field service with fully equipped mobile tooling trailers for onsite heat exchanger repairs and complete overhauls.
- + **Shell and Water Head Repairs** include blasting, machining sealing surfaces, pass partition repair, and epoxy coating.
- + **Tube Repairs** include cleaning, hydro testing, tube expanding, tube bundles or re-tube, and tube plugging.
- + **Manufacturing** new tube bundles and complete tube and shell coolers



# Air/Gas Dryers



*Desiccant Dryers*



*Refrigerated Dryers*



*Membrane Dryers*



*Deliquescent Dryers*



*Breathing Air Dryers*



*Point of Use Dryers*

CONTROLS  
MOTORS  
PUMPS  
VALVES  
COMPRESSORS  
PNEUMATICS  
SAWMILLS  
METAL RECYCLING  
TRANSIT & RAILROAD  
WATER & WASTEWATER  
DIMENSIONS & MOUNTING



# Filtration



*Filter Elements*



*Filter Assemblies*



*Mist Eliminators*



*Air/Oil Separators*



*Oil/Water Separators*



*Centrifugal Separators*

CONTROLS

MOTORS

PUMPS

VALVES

COMPRESSORS

PNEUMATICS

SAWMILLS

METAL  
RECYCLING

TRANSIT &  
RAILROAD

WATER &  
WASTEWATER

DIMENSIONS  
& MOUNTING



# Lubricants & Chemicals

---

## WE SUPPLY

- + Compressor Oils
- + Refrigeration Oils
- + Food Grade Lubricants
- + Gear & Bearing Oils
- + Hydraulic Oils
- + Pump & Blower Oils
- + Heat Transfer Fluids
- + Cleaners/Flush
- + Descalers & Degreasers



(888) 384-2111 840 Gessner Rd, Ste 950, Houston, TX 77024 [ISS-NA.com](http://ISS-NA.com)

© 2024 Industrial Service Solutions, LLC. All Rights Reserved. PUB2024