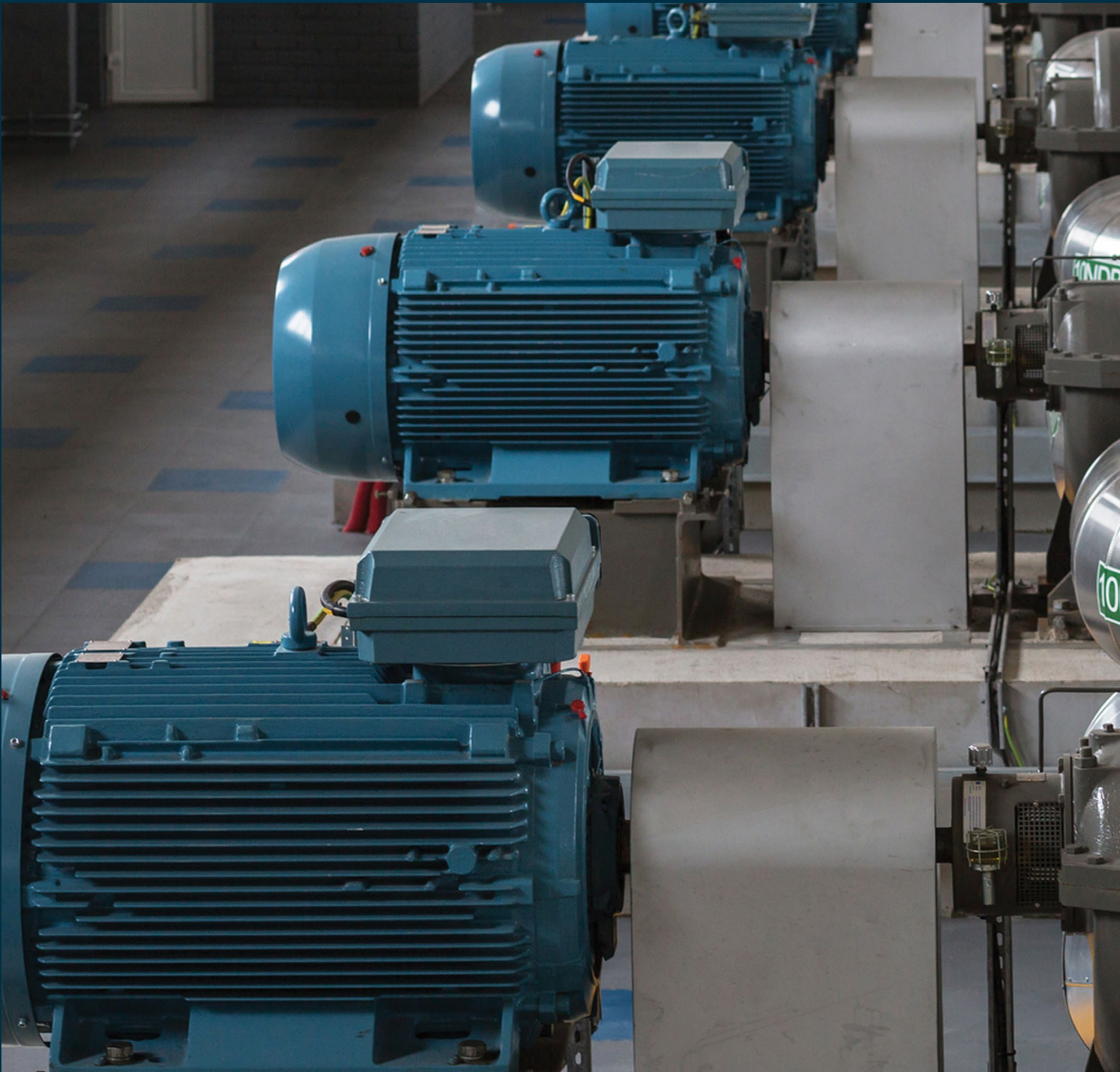




Product & Service Catalog

PUMPS





Pump Field Services

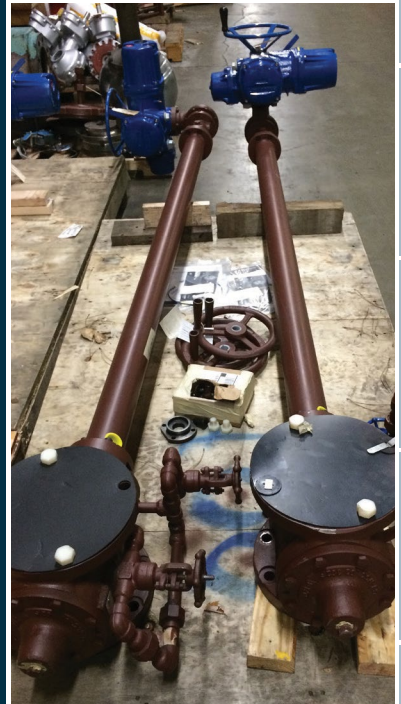
Industrial Service Solutions is available around-the-clock for your unplanned maintenance and emergency repairs. Whether its excessive vibration or operational issues, our highly skilled technicians have the know-how and independent capabilities to troubleshoot, diagnose, and yield solutions for all pump types, brands, and applications. With a fleet of service vehicles, including 53-foot mobile tooling trailers, we are fully equipped to machine, weld, fabricate, test, and repair equipment onsite.

- + *24/7 Emergency Service*
- + *Preventative Maintenance*
- + *Mechanical & Electrical Repairs*
- + *Machining & Part Fabrication*
- + *Onsite Flange Facing*
- + *Bearing & Seal Replacement*
- + *Packing Replacement*
- + *Installation & Rigging Service*
- + *Precision Laser Alignment*
- + *Start-up & Troubleshooting*
- + *Performance Testing*
- + *Vibration Analysis*
- + *Dynamic Balancing*
- + *Infrared Thermal Imaging*

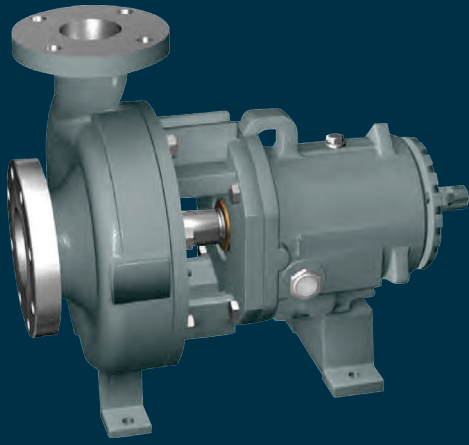
Pump Repairs & Overhauls

When a pump issue cannot be addressed in the field, our repair shops across the United States are fully equipped and ready to service any industrial pump. Our experts have extensive OEM knowledge and often receive pumps our competitors do not or will not repair. We repair pumps to like-new condition, usually better than new, with tighter tolerances, and enhanced efficiency. Our technicians can recommend upgrades to prolong your pump's lifespan and our engineers can design a customized pump system if you need more capacity. Even if parts are unavailable, our machinists have the capability to manufacture custom parts on demand to keep your downtime to a minimum.

- | | | |
|------------------------|-----------------------------|-----------------------------|
| + <i>ANSI Pumps</i> | + <i>Axial Flow Pumps</i> | + <i>End Suction Pumps</i> |
| + <i>Gear Pumps</i> | + <i>Booster Pumps</i> | + <i>Multi-Screw Pumps</i> |
| + <i>In-line Pumps</i> | + <i>Diaphragm Pumps</i> | + <i>Multi-Stage Pumps</i> |
| + <i>Lobe Pumps</i> | + <i>Centrifugal Pumps</i> | + <i>Non-Metallic Pumps</i> |
| + <i>Mixers</i> | + <i>Grinder Pumps</i> | + <i>Self-Priming Pumps</i> |
| + <i>Slurry Pumps</i> | + <i>Progressive Cavity</i> | + <i>Sliding Vane Pumps</i> |
| + <i>Trash Pumps</i> | + <i>Split Case Pumps</i> | + <i>Submersible Pumps</i> |
| + <i>Well Pumps</i> | + <i>Turbine Pumps</i> | |



- CONTROLS
- MOTORS
- PUMPS**
- VALVES
- COMPRESSORS
- PNEUMATICS
- SAWMILLS
- METAL RECYCLING
- TRANSIT & RAILROAD
- WATER & WASTEWATER
- DIMENSIONS & MOUNTING



MP-3 ANSI Centrifugal Pumps

Equivalent to Flowserve Durco Mark III

APPLICATIONS

- + Acid Transfer
- + Brine
- + Chemical Processing
- + Petrochemical Processing
- + Corrosive Services
- + Food & Beverage Processing
- + Hydrocarbon Processing
- + Pharmaceuticals

G1 SIZES	1.5x1LF-4, 1.5x1-6, 3x1.5-6, 3x2-6, 1.5x1LF-8, 1.5x1-8, 3x1.5-8
G2 SIZES	3x2-8, 4x3-8, 2x1LF-10, 2x1-10A, 3x1.5-10A, 3x2-10A, 4x3-10, 4x3-10H, 6x4-10, 6x4-10H, 3x1.5LF-13, 3x1.5-13, 3x2-13, 4x3-13, 4x3-13HH, 6x4-13A
G3 SIZES	8x6-14A, 10x8-14, 6x4-16, 8x6-16A, 10x8-16, 10x8-16H, 10x8-17
FLOW	to 7,000 GPM
HEADS	to 730 FT
PRESSURES	to 375 PSI
TEMPERATURES	to 700°F
STANDARDS	ISO-9001, ANSI B731
CONFIGURATIONS	Standard, Low Flow, Recessed Impeller, Self-Priming

FEATURES

- + Heavy-duty casing with integral foot and multi-ribbed discharge flange provides superior resistance to pipe loads and improves reliability
- + Precision cast reverse vane impeller is the only impeller design that offers repeatable pump performance throughout the life of the pump
- + Open impellers available
- + Seal chamber extends seal life and provides advanced self-flushing capability
- + Standard non-contacting labyrinth seals keep lubricant in and contaminants out
- + Heavy-duty radial and thrust bearings selected for long life and reliability
- + External micrometer impeller adjustment mechanism accurately sets impeller clearance in 20 seconds
- + Two-piece, ductile iron bearing housing is designed for safety, strength, interchangeability and retrofit capability
- + Back pull-out design allows removal of rotating element without removing casing, piping, or motor

Performance
Page 182



MP-6913 ANSI Centrifugal Pumps

Equivalent to ITT Goulds 3196

APPLICATIONS

- + Air Separation & HVAC
- + Chemical & Petrochemical
- + Grain/Corn Processing
- + Power Generation
- + Pulp & Paper
- + Marine & Shipbuilding

SIZES	1x1.5-6, 1.5x3-6, 2x3-6, 3x4-7, 1x1.5-8, 1.5x3-8, 2x3-8, 3x4-8, 3x4-8G, 1x2-10, 1.5x3-10, 2x3-10, 3x4-10, 3x4-10H, 4x6-10, 4x6-10H, 1.5x3-13, 2x3-13, 3x4-13, 4x6-13, 6x8-13, 8x10x13, 6x8-15, 8x10-15, 8x10-15G
FLOW	to 7,000 GPM
HEADS	to 730 FT
PRESSURES	to 375 PSI
TEMPERATURES	to 700°F
STANDARDS	ISO-9001, ANSI B73.1
CONFIGURATIONS	Standard, Low Flow, Recessed Impeller

FEATURES

- + Easier to automate than gate valves, often easier than rotary valves
- + Lower installation cost and higher performance than gate valves
- + Provides reliability and tight shut-off under many damaging process conditions
- + Can easily be adapted to comply with evolving emission regulations
- + Positive shaft retention prevents movement of the shaft past the compression plate
- + Flexible-lip polymeric seat assures positive shut-off, extending life cycle
- + Only the insert needs to be removed to replace the seat; the insert and seat are self-aligning
- + Low torque requirements allow the use of less costly actuators
- + Available in a broad range of materials for standard and special services including chlorine, oxygen, cryogenics, and vacuum.

Performance

Page 183



MP-MAG-I Centrifugal Pumps

Equivalent to MISSION Magnum

APPLICATIONS

- + Ash or Coal Conveyors
- + Barite, Ferric Oxide, Mineral Oil
- + Base Drilling Muds
- + Cement
- + Crystalline Forms
- + Glass Fibers
- + Kaolin Clay
- + Lime Slurries
- + Mine De-Watering
- + Sugar Processing

SIZES	6x5-11, 8x6-11, 3x2-13, 4x3-13, 5x4-14, 6x5-14, 8x6-14, 10x8-14
FLOW	to 2,600 GPM
HEADS	to 550 FT

FEATURES

- + Up to 50% more capacity from the 8x6 pump
- + Optimum pressure at low operating speeds
- + Thicker casing to extend life from wear and corrosion
- + New impeller design to reduce loads and extend wearing life
- + Larger and stronger shaft to reduce deflection
- + Replaceable shaft sleeve in packing wear area
- + Larger and longer life bearings
- + Replaceable stuffing box cover
- + Smoother, non-turbulent flow throughout casing

*Dimensions
Page 184*



MP-MAG-XP Centrifugal Pumps

Equivalent to MISSION Magnum XP

APPLICATIONS

- + Blending
- + Bottom Ash
- + Copper, Bauxite, Quarry Slurries
- + Dredge Tailings
- + Fluid Supercharging
- + Fly Ash
- + Food Processing
- + Lead & Zinc Ore & Tailings
- + Nickel Shot
- + Paper Pulp Processing
- + Sand Slurry
- + Sewage
- + Slag
- + Spent Liquor
- + Waste Slurries

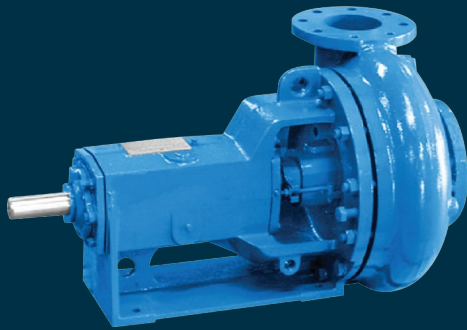
SIZES	14x12-22, 12x10-23, 8x6-18
PRESSURES	from 3,000 to 7,500 GPM
HEADS	from 75 to 410 FT

FEATURES

- + Versatile stuffing box
- + One-piece casing
- + Casing gasket recessed for protection
- + Back vanes reduce collection of solids at stuffing box
- + Long-life, no-adjustment mechanical seal available for near zero leakage
- + Replaceable shaft sleeve
- + Lip seals for maximum bearing protection (labyrinth seals optional)
- + Duplex angular contact bearings
- + Thicker, stronger concentric casings
- + Full pipe diameter entrance for minimum turbulence and maximum efficiency
- + Single row roller bearings for increased bearing life
- + Easily accessible front access drain
- + Reduced high bearing loads

Dimensions

Page 185



MP-2500 Centrifugal Pumps

Equivalent to MISSION 2500 Supreme

APPLICATIONS

- + Ash or Coal Conveyors
- + Barite, Ferric Oxide, Mineral Oil
- + Base Drilling Muds
- + Cement
- + Crystalline Forms
- + Glass Fibers
- + Kaolin Clay
- + Lime Slurries
- + Mine De-Watering
- + Sugar Processing

SIZES	6x5-11, 8x6-11, 3x2-13, 4x3-13, 5x4-14, 6x5-14, 8x6-14, 10x8-14
FLOW	to 2,600 GPM
HEADS	to 550 FT

FEATURES

- + Versatile stuffing box
- + Thick, strong, concentric casing with replaceable casing wear pad
- + Casing gasket recessed for protection
- + Replaceable stuffing box cover with dual stuffing box bolts
- + Long-life, no-adjustment mechanical seal available for near zero leakage
- + Replaceable shaft sleeve
- + Solid frame base
- + Labyrinth seals for maximum bearing protection
- + Duplex angular contact bearings
- + Full pipe diameter entrance for minimum turbulence and maximum efficiency
- + Wide semi-open impeller creates lower axial thrust for improved bearing life
- + All sizes feature the same power cord

*Dimensions
Page 186*



MP-MChr Centrifugal Pumps

Equivalent to MISSION Magnachrome

APPLICATIONS

- + Ash or Coal Conveyors
- + Barite, Ferric Oxide, Mineral Oil
- + Base Drilling Muds
- + Cement
- + Crystalline Forms
- + Glass Fibers
- + Kaolin Clay
- + Lime Slurries
- + Mine De-Watering
- + Sugar Processing

SIZES

6x5-11, 8x6-11, 3x2-13, 4x3-13, 5x4-14, 6x5-14, 8x6-14, 10x8-14

FLOW

to 2,600 GPM

HEADS

to 550 FT

FEATURES

- + High grade, heavy walled, solid construction offering superior performance over lined pumps and those using inserts
- + One power frame fits all sizes
- + Double row angular contact bearings to minimize axial thrust
- + Double row inboard bearings to minimize effects of radial load
- + Greater capacity and higher heads for extremely abrasive fluids



MP-SandM Centrifugal Pumps

Equivalent to MISSION Sandmaster

APPLICATIONS

- + Air Separation & HVAC
- + Chemical & Petrochemical
- + Grain/Corn Processing
- + Power Generation
- + Pulp & Paper
- + Marine & Shipbuilding

SIZES	6x5-11, 8x6-11, 3x2-13, 4x3-13, 5x4-14, 6x5-14, 8x6-14, 10x8-14
FLOW	to 2,600 GPM
HEADS	to 550 FT

FEATURES

- + More compact design than MP-MAG-I
- + Can be adapted for hydraulic motor drive
- + Up to 50% more capacity from the 8x6 pump
- + Optimum pressure at low operating speeds
- + Thicker casing to extend life from wear and corrosion
- + New impeller design to reduce loads and extend wearing life
- + Larger and stronger shaft to reduce deflection
- + Replaceable shaft sleeve in packing wear area
- + Larger and longer life bearings
- + Replaceable stuffing box cover
- + Smoother, non-turbulent flow throughout casing



MP-LJC

Vertical Turbine Pumps

Equivalent to ITT Goulds VTP

APPLICATIONS

- + Boiler Feed
- + Chemical Transfer
- + Condensate Service
- + Cryogenics
- + Injection Secondary Recovery
- + Light Hydrocarbons
- + LNG Transfer
- + Pipeline Booster
- + Product Transfer
- + Refinery Blending
- + Water Services

MODEL	CAPACITY M ³ /H	HEAD M			STAGE I	STRING QTY MM	RPM	kW	EFF	DIA MM
100MPLJC10-4	6.51012	44	40	32	10	8	2940	5.5	62	92
		52.5	44	35	11					
		53	48	38	12					
		58	52	41.5	13					
		61.5	56	44.5	14					
		66	60	48	15					
		70	64	51	16					
		74.5	68	54	17					
		79	72	57.5	18					
		83.5	76	60.5	19					
		88	80	64	20					
		92	84	67	21					
		96.5	88	70	22					
		102	92	73.5	23					
105.5	96	76.5	24							
110	100	80	25							
115	104	83	26							
150MPLJC10-9	8	56	54	40	6	12	2940	5.5	62	138
		65	63	47	7					
		74.5	72	54	8					
		84	80	61	9					
		93	89	67.5	10					
		102.5	98	61.5	11					
		112	108	81	12					
		121	117	87.5	13					
		130	126	94.5	14					
		139.5	135	101	15					
149	144	108	16							
	10						7.5			
	16						11			

FEATURES

- + Fabricated discharge head and flanged column
- + Flanged bowl construction and 416SS shafting
- + In-line suction and discharge simplifies installation
- + Optional suction in can for site piping flexibility
- + Inherent design features allow efficient operation at any NPSH available
- + Alloy construction with external flush of critical wear areas available for corrosive/abrasive services
- + Built-in alignment and simple piping for less costly installation and ease of maintenance/reduced downtime

Dimensions

Page 188



MPP High Efficiency Slurry Pumps

Equivalent to Weir Warman AH

APPLICATIONS

- + Cooling & Heating Systems
- + Desalination Plants
- + Fire Protection
- + Irrigation & Drainage
- + Long Distance Water Supply
- + Marine & Offshore Engineering
- + Power Stations
- + Pressure Boosting
- + Water Transport
- + Water Utilities

SIZES	TBD
FLOW	TBD
HEADS	TBD
PRESSURES	TBD
TEMPERATURES	from -40°F to 250°F
HORSEPOWER	to 1,500 HP
STANDARDS	ISO-9001, ISO-9002

FEATURES

- + Single case construction without shaft seal provides easy installation and maintenance
- + Pump casing, cover, and impeller are made of 28% chrome (ASTM A532) cast iron to ensure wear resistance
- + Single volute design for low constant radial loads and a tapered fitting between the case and cover for easy assembly and disassembly
- + Open or closed impeller with twisted vanes for high efficiency and good flow conditions to ensure even wear
- + Heavy shaft and no shaft seal for severe operating conditions
- + Pump and motor can be directly coupled or connected with belts



MP-DS Double Suction Split Case Pumps

Equivalent to ITT Goulds 3420

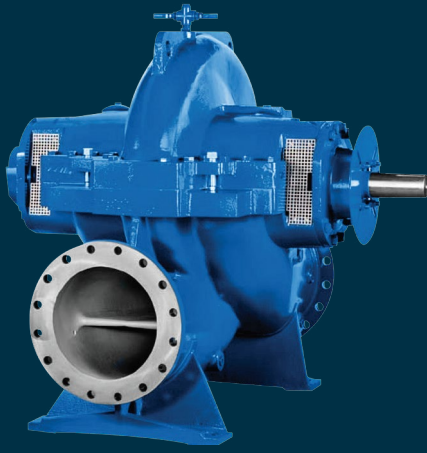
APPLICATIONS

- + Cooling & Heating Systems
- + Desalination Plants
- + Fire Protection
- + Irrigation & Drainage
- + Long Distance Water Supply
- + Marine & Offshore Engineering
- + Power Stations
- + Pressure Boosting
- + Water Transport
- + Water Utilities

SIZES	14 to 48 IN
FLOW	to 79,260 GPM (higher rates available)
HEADS	to 1,800 FT
PRESSURES	to 1,015 PSI
TEMPERATURES	to 175°F
STANDARDS	API 610, ANSI B73.1

FEATURES

- + Horizontal or vertical installation with double entry radial impeller
- + Mating flanges to DIN, ISO, BS, or ANSI
- + High operating reliability and excellent efficiencies keep operating costs down
- + Service friendly design to the world's highest standards on quality, safety, reliability, and durability
- + Low maintenance costs and high availability
- + Sustainable pump design with low life cycle costs



MP-ANSI Double Suction Split Case Pumps

Equivalent to ITT Goulds 3410

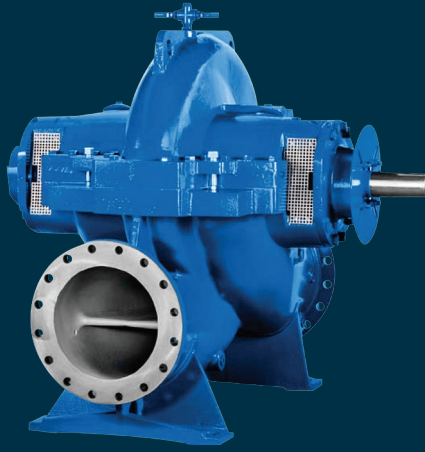
APPLICATIONS

- + Cooling & Heating Systems
- + Desalination Plants
- + Fire Protection
- + Irrigation & Drainage
- + Long Distance Water Supply
- + Marine & Offshore Engineering
- + Power Stations
- + Pressure Boosting
- + Water Transport
- + Water Utilities

SIZES	3 to 14 IN
FLOW	to 12,680 GPM (higher rates available)
HEADS	to 690 FT
PRESSURES	to 360 PSI
TEMPERATURES	to 285°F
STANDARDS	API 610, ANSI B73.1

FEATURES

- + Horizontal or vertical installation with double entry radial impeller
- + Mating flanges to DIN, ISO, BS, or ANSI
- + High operating reliability and excellent efficiencies keep operating costs down
- + Service friendly design to the world's highest standards on quality, safety, reliability, and durability
- + Low maintenance costs and high availability
- + Sustainable pump design with low life cycle costs



MP-DSP Double Suction Split Case Pumps

Equivalent to ITT Goulds 3415

APPLICATIONS

- + Cooling & Heating Systems
- + Desalination Plants
- + Fire Protection
- + Irrigation & Drainage
- + Long Distance Water Supply
- + Marine & Offshore Engineering
- + Power Stations
- + Pressure Boosting
- + Water Transport
- + Water Utilities

SIZES	14 to 28 IN
FLOW	to 44,000 GPM (higher rates available)
HEADS	to 790 FT
PRESSURES	to 360 PSI
TEMPERATURES	to 285°F
STANDARDS	API 610, ANSI B73.1

FEATURES

- + Horizontal or vertical installation with double entry radial impeller
- + Mating flanges to DIN, ISO, BS, or ANSI
- + High operating reliability and excellent efficiencies keep operating costs down
- + Service friendly design to the world's highest standards on quality, safety, reliability, and durability
- + Low maintenance costs and high availability
- + Sustainable pump design with low life cycle costs



SH Series Submersible HD Pumps

Equivalent to Tsurumi HS Series

APPLICATIONS

- + General Purpose
- + Civil Engineering & Construction Works
- + Mines, Quarries, Coal Ore, & Slurries
- + Sewage Treatment Plants

FEATURES

- + Capacity up to 372m³/h
- + Head up to 295'
- + 30 HP to 60 HP
- + Class F Insulation
- + IP68 Protection Class
- + 65' Cable Length (optional)
- + 40°C Ambient Temperature
- + 98' Max Water Depth

MODEL 50/60Hz	OUTLET		POWER		CURR	CAPACITY		HEAD	MAX CAPACITY		MAX HEAD	IMPELLER PASSAGE
	MM	HP	KW	A	M ³ /H	M ³ /MIN	M	M ³ /H	M ³ /MIN	M	MM	
SH422	100	30	22	41.5	66	11	60	130/138	217/2.3	68	6	
SH430	100	40	30	54	72	1.2	70/75	170/144	2.83/2.4	78/82	6	
SH622	150	30	22	41.5	120	2.0	37/40	200/210	3.33/3.5	50/52	15	
SH630	150	40	30	54	140	2.33	45/48	220/216	3.67/3.6	58/64	15	
SH637	150	50	37	66	60	1.0	80	220	3.67	83	6	
SH645	150	60	45	80	84	1.4	80	220	3.67	90	6	
SH837	200	50	37	66	216	3.6	35	330	5.5	48	20	
SH845	200	60	45	80	270	4.5	35	372	6.2	53	20	



KBZ Series Submersible Drainage Pumps

APPLICATIONS

- + General Purpose
- + Civil Engineering
- + Mines, Quarries, Coal Ore, & Slurries
- + Sewage Treatment Plants

FEATURES

- + Capacity up to 160m³/h
- + Head up to 187'
- + 2 HP to 20 HP
- + Class F Insulation
- + IP68 Protection Class
- + 26' Cable Length (optional)
- + 40°C Ambient Temperature
- + 82' Max Water Depth

MODEL 50Hz	OUTLET	POWER		CURR 380V	CAPACITY		HEAD	MAX CAPACITY		MAX HEAD	IMPELLER PASSAGE
	MM	HP	KW	A	M ³ /H	M ³ /MIN	M	M ³ /H	M ³ /MIN	M	MM
KBZ21.5	50	2	1.5	3.5	15	0.25	16.5	27	0.45	23	8.5
KBZ31.5	80	2	1.5	3.5	30	0.5	9	45	0.75	15	8.5
KBZ22.2	50	3	2.2	5.1	18	0.3	20	31	0.52	28	8.5
KBZ32.2	80	3	2.2	5.1	30	0.6	13	47	0.78	20.5	8.5
KBZ23.7	50	5	3.7	8	12	0.2	30	50	0.83	33	8.5
KBZ33.7	80	5	3.7	8	30	0.5	22	55	0.92	31	8.5
KBZ43.7	100	5	3.7	8	60	1	11.5	96	1.6	18.5	8.5
KBZ35.5	80	7.5	5.5	11.6	36	0.6	25	69	1.15	38	8.5
KBZ45.5	100	7.5	5.5	11.6	60	1	16	102	1.7	24.4	8.5
KBZ47.5	100	10	7.5	15.4	48	0.8	30	80	1.33	41	11.5
KBZ67.5	150	10	7.5	15.4	90	1.6	15	127	2.12	31	19.5
KBZ411	100	15	11	22.5	60	1	35	84	1.4	48.5	11.5

MODEL 60Hz	OUTLET	POWER		CURR 400V	CAPACITY		HEAD	MAX CAPACITY		MAX HEAD	IMPELLER PASSAGE
	MM	HP	KW	A	M ³ /H	M ³ /MIN	M	M ³ /H	M ³ /MIN	M	MM
KBZ21.5	50	2	1.5	3.5	15	0.25	15	27	0.45	22	8.5
KBZ31.5	80	2	1.5	3.5	30	0.5	8	40	0.67	14.5	8.5
KBZ22.2	50	3	2.2	5.0	18	0.3	20	33	0.55	26	8.5
KBZ32.2	80	3	2.2	5.0	36	0.6	11	55	0.92	19	8.5
KBZ23.7	50	5	3.7	7.7	12	0.2	30	33	0.55	34	8.5
KBZ33.7	80	5	3.7	7.7	30	0.5	20	55	0.92	29	8.5
KBZ43.7	100	5	3.7	7.7	60	1	11.5	90	1.5	18.5	8.5
KBZ35.5	80	7.5	5.5	11.4	36	0.6	25	75	1.25	34	8.5
KBZ45.5	100	7.5	5.5	11.4	60	1	16	105	1.75	23	8.5
KBZ47.5	100	10	7.5	15	48	0.8	30	84	1.4	40	11.5
KBZ67.5	150	10	7.5	15	90	1.6	15	124.8	2.08	31	19.5
KBZ411	100	15	11	22	60	1	35	84	1.4	48.5	11.5

Dimensions & Performance

Page 180



(888) 384-2111 840 Gessner Rd, Ste 950, Houston, TX 77024 ISS-NA.com

© 2024 Industrial Service Solutions, LLC. All Rights Reserved. PUB2024