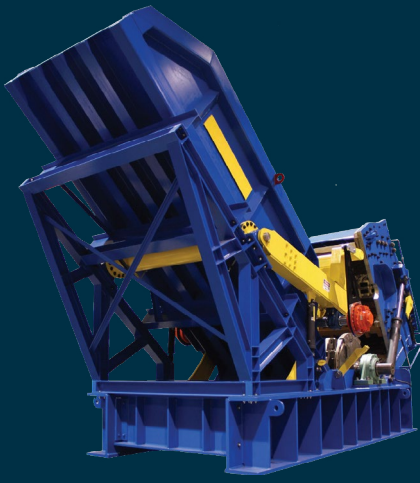




# Product & Service Catalog

# ***METAL RECYCLING***





# Stationary Shredders

*Process 40 to 300 tons/hr*

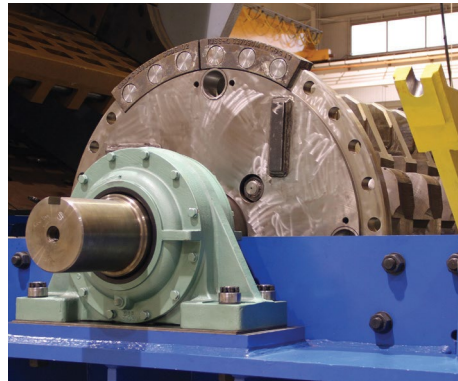
## INPUT MATERIAL

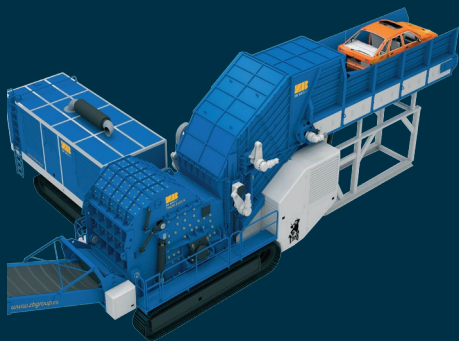
- + Aluminum Cans
- + Loose & Mixed Aluminum Scrap
- + Aluminum Profiles
- + Aluminum Pipes
- + Aluminum Sumps
- + Aluminum Scrap Bales
- + Aluminum Engine Blocks
- + Metal Cans & Light Scrap
- + Slightly Pressed, Sheared, & Entire Metal Scrap Bales
- + Car Parts
- + Sheared, Flattened, & Entire Cars
- + Small, Medium, & Large White Goods/Appliances
- + CDW & Concrete

MODEL	HP	WIDTH	ROTOR	CAPACITY
7090	1,000 - 4,000	90"	70"	40 - 100 tons/hr
80108	2,000 - 5,000	108"	80"	60 - 120 tons/hr
98104	4,000 - 6,000	104"	98"	120 - 200 tons/hr
120118	6,000 - 9,000	118"	120"	200 - 300 tons/hr

## FEATURES

- + Can be driven by AC or DC motors
- + Averages 40 tons/hr at 1,000 HP and up to 300 tons/hr at 9,000 HP
- + Heavy duty feed chute is constructed of heavy beams and torque tube to prevent flexing
- + Feed roll cover prevents material from flipping onto the shredder housing, which prevents downtime and maintains a safe, clean environment
- + Haggblunds feed roll drive is the standard for longevity and ease of maintenance
- + Built with 4" side walls and completely lined
- + Same thickness of grates and liners of larger shredders
- + Proven spyder style rotor and disc rotors with heavy duty lubricated bearings and housing





# Mobile Hammer Mills

Process 11 to 40 tons/hr

## INPUT MATERIAL

- + Aluminum Cans
- + Loose & Mixed Aluminum Scrap
- + Aluminum Profiles
- + Aluminum Pipes
- + Aluminum Sumps
- + Aluminum Scrap Bales
- + Aluminum Engine Blocks
- + Metal Cans & Light Scrap
- + Slightly Pressed, Sheared, & Entire Metal Scrap Bales
- + Car Parts
- + Sheared, Flattened, & Entire Cars
- + Small, Medium, & Large White Goods/Appliances
- + CDW & Concrete

MODEL	bHP	SHREDDER			FEED	DISCHARGE	CAPACITY
		WIDTH	ROTOR	HAMMER			
1521K	760	60"	82"	230 lbs	60" x 186"	40" x 216"	11 - 16 tons/hr
1721K	220	67"	82"	230 lbs	67" x 276"	47" x 216"	16 - 27 tons/hr
2121KC	1,200	82"	82"	225 lbs	83" x 216"	63" x 216"	16 - 33 tons/hr
2121K	220	83"	82"	230 lbs	83" x 276"	63" x 216"	22 - 38 tons/hr
8080K	220	83"	80"	230 lbs	83" x 276"	63" x 216"	25 - 40 tons/hr

## FEATURES

- + Final product density upgrade and volume reduction
- + Wide range of materials to process
- + Designed to minimize wear and maintenance costs
- + Optimized footprint and mounted on track system for high mobility
- + Reduced assembly time for low assembly cost
- + Top quality components and vendor list provides high residual value
- + Process monitoring and optimization service





# TAURUS

## Shear Balers

*Kappa, Mille, Rapid, & Giant Series*

### INPUT MATERIAL

- + Scrap Bale
- + ELV Cars
- + Collection & Heavy Scrap
- + Demolition Sheared

MODEL	HP	SHEAR FORCE	BOX LENGTH	CYL. PER WING	COMP. MAX FORCE	MAIN CYL. FORCE	BALE SIZE
K662	250	600 tons	240"	2	300 tons	150 tons	34" x 23"
K772	250	700 tons	283"	2	300 tons	150 tons	34" x 23"
K872	350	800 tons	283"	2	350 tons	150 tons	34" x 23"
K973	350	900 tons	283"	3	450 tons	150 tons	34" x 23"
ACH107	350	1,000 tons	283"	3	450 tons	150 tons	34" x 23"
ACH117	350	1,100 tons	283"	3	450 tons	150 tons	34" x 23"
RH117	450	1,100 tons	283"	3	450 tons	150 tons	39" x 27"
RH137	450	1,300 tons	283"	3	450 tons	150 tons	39" x 27"
RS117	450	1,100 tons	283"	3	450 tons	150 tons	39" x 27"
RS137	450	1,300 tons	283"	3	450 tons	150 tons	39" x 27"
ASG148	-	1,400 tons	326"	3	600 tons	180 tons	43" x 31"
ASG158	-	1,500 tons	326"	3	600 tons	180 tons	43" x 31"

### FEATURES

- + Robust machines suitable for high density compacting and shearing of large quantities of mixed and bulky scrap from collection or demolition
- + Can be loaded from both sides and managed by a single operator
- + Hydraulic power system combines low consumption with high performance to allow higher cutting speeds
- + Box floor and lids are made of high-strength and wear resistant steel
- + Equipped with patented oscillating wing compression system with over stroke on both lids to facilitate scrap compression and reduce frictional wear
- + Single monolithic body makes it easy to install and reposition
- + Mounted on a welded steel support structure equipped with original VDP self-leveling and anti-vibration plate system



**TAURUS**

# Baler Loggers

*Biblo & Mizar Series*



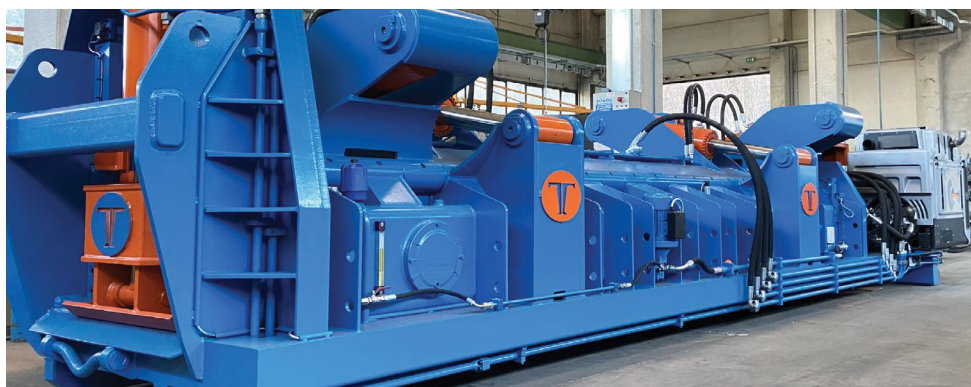
## INPUT MATERIAL

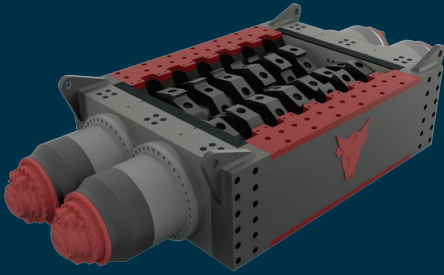
- + Light Scrap
- + Aluminum Bars, Plates & Sheets
- + ELV Cars
- + White Household appliances
- + Rod, Sheet, & Collected Scrap

MODEL	HP	BOX LENGTH	CYL. PER WING	COMP. MAX FORCE	MAIN CYL. FORCE	BALE SIZE
BB44	75	106"	1	100 tons	160 tons	15" x 15"
BB55	75	157"	2	165 tons	160 tons	19" x 19"
BB66	75	196"	2	200 tons	160 tons	23" x 23"
M52B	145	196"	2	160 tons	-	34" x 23"
M52D	145	196"	2	160 tons	-	34" x 23"
M62B	145	240"	2	160 tons	-	34" x 23"
M62D	145	240"	2	160 tons	-	34" x 23"

## FEATURES

- + Single ridged squeeze box constructed of Hardox wear resistant steel
- + Single oscillating lid is hinged at the center and provides two stage compression, which reduces pre-compression cycle time and generates an offset square bale
- + The offset bale reduces wear and tear on the squeeze box and minimizes vibrations during compression cycle
- + Hydraulic aggregate and electrical components are located safely in the rear
- + Fixed on single supporting framework eliminates need for expensive foundations
- + Quick and easy to transport and can be equipped with a roll on/off lifting hook





# TAURUS

## Rotary Shears

*Delta Series*

### INPUT MATERIAL

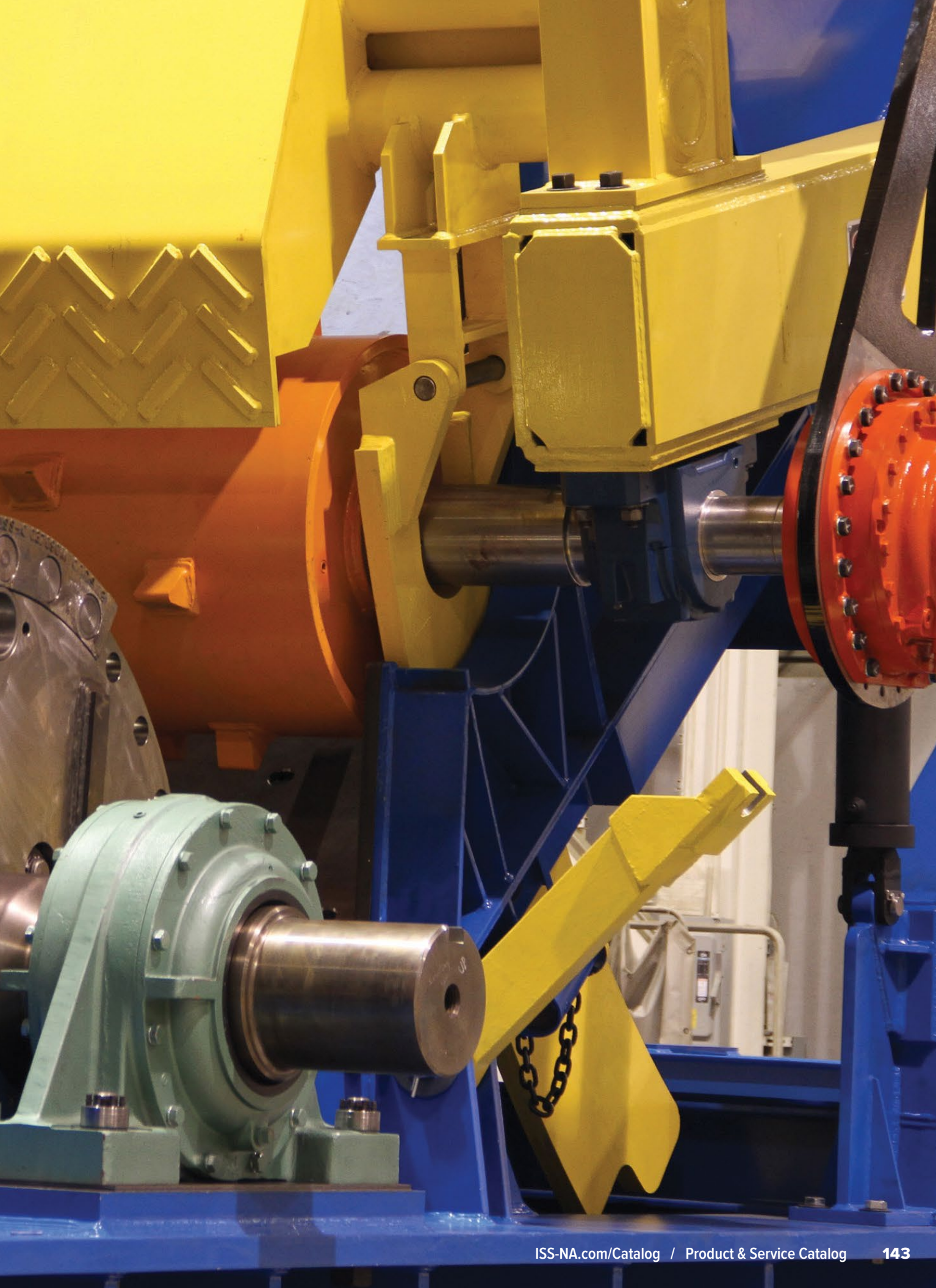
- + Industrial & General Waste
- + Metal Containers
- + Light, Collection, & Heavy Scrap
- + ELV Cars
- + Pantographed Sheets
- + Household appliances
- + Packaging, Pallets, & Crates
- + Electric Cabinets
- + Telephones & Coin Acceptors
- + Archives, Tires, & Copper Cables

MODEL	FEEDING CHAMBER	BLADES THICKNESS	WEIGHT	OUTPUT
D82	86" x 63"	7-7/8"	50 tons	20 tons/hr
D94	86" x 67"	7-7/8"	60 tons	30 tons/hr
D15	86" x 78"	7-7/8"	75 tons	50 tons/hr
D16	86" x 78"	7-7/8"	80 tons	60 tons/hr

### FEATURES

- + Low speed and high torque counter rotating blades
- + Includes steelwork platform, loading hopper, and 20" container





CONTROLS

MOTORS

PUMPS

VALVES

COMPRESSORS

PNEUMATICS

SAWMILLS

**METAL  
RECYCLING**

TRANSIT &  
RAILROAD

WATER &  
WASTEWATER

DIMENSIONS  
& MOUNTING





(888) 384-2111 840 Gessner Rd, Ste 950, Houston, TX 77024 [ISS-NA.com](http://ISS-NA.com)

© 2024 Industrial Service Solutions, LLC. All Rights Reserved. PUB2024